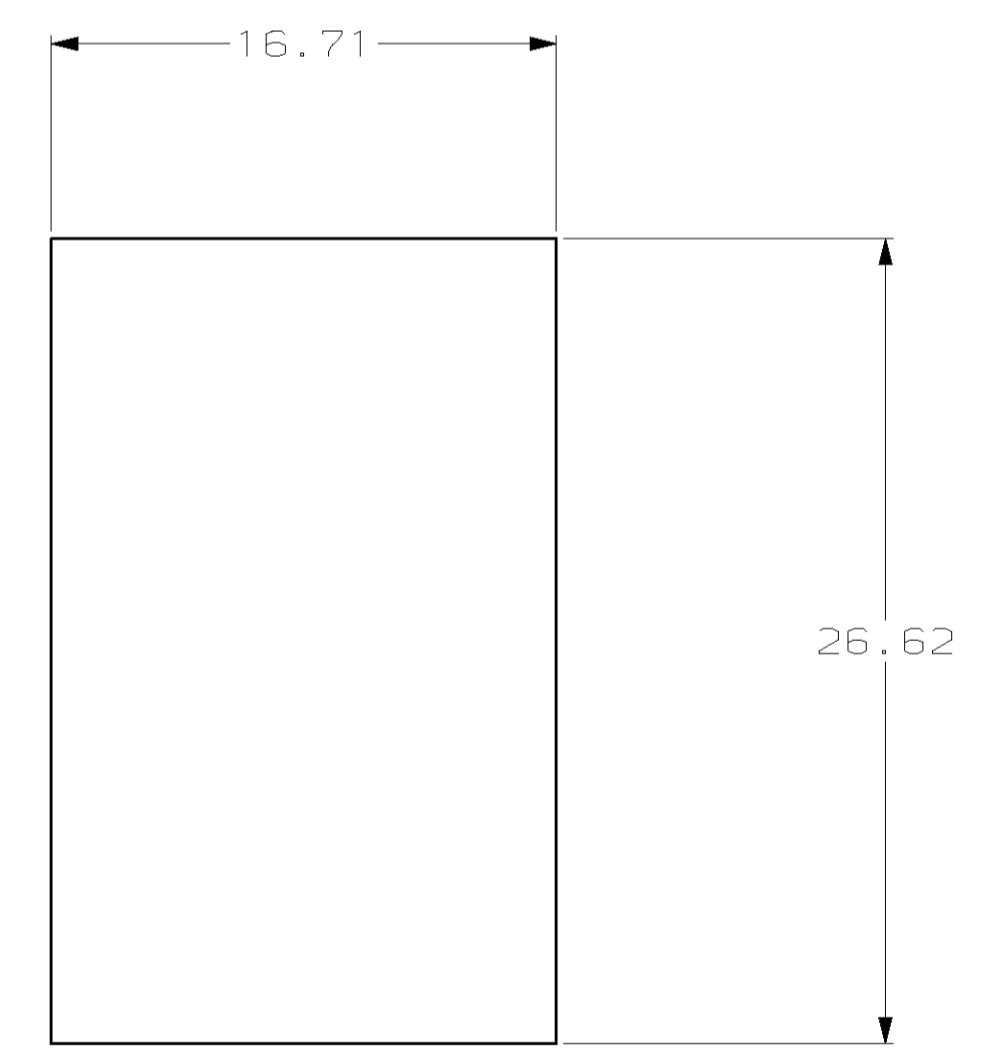
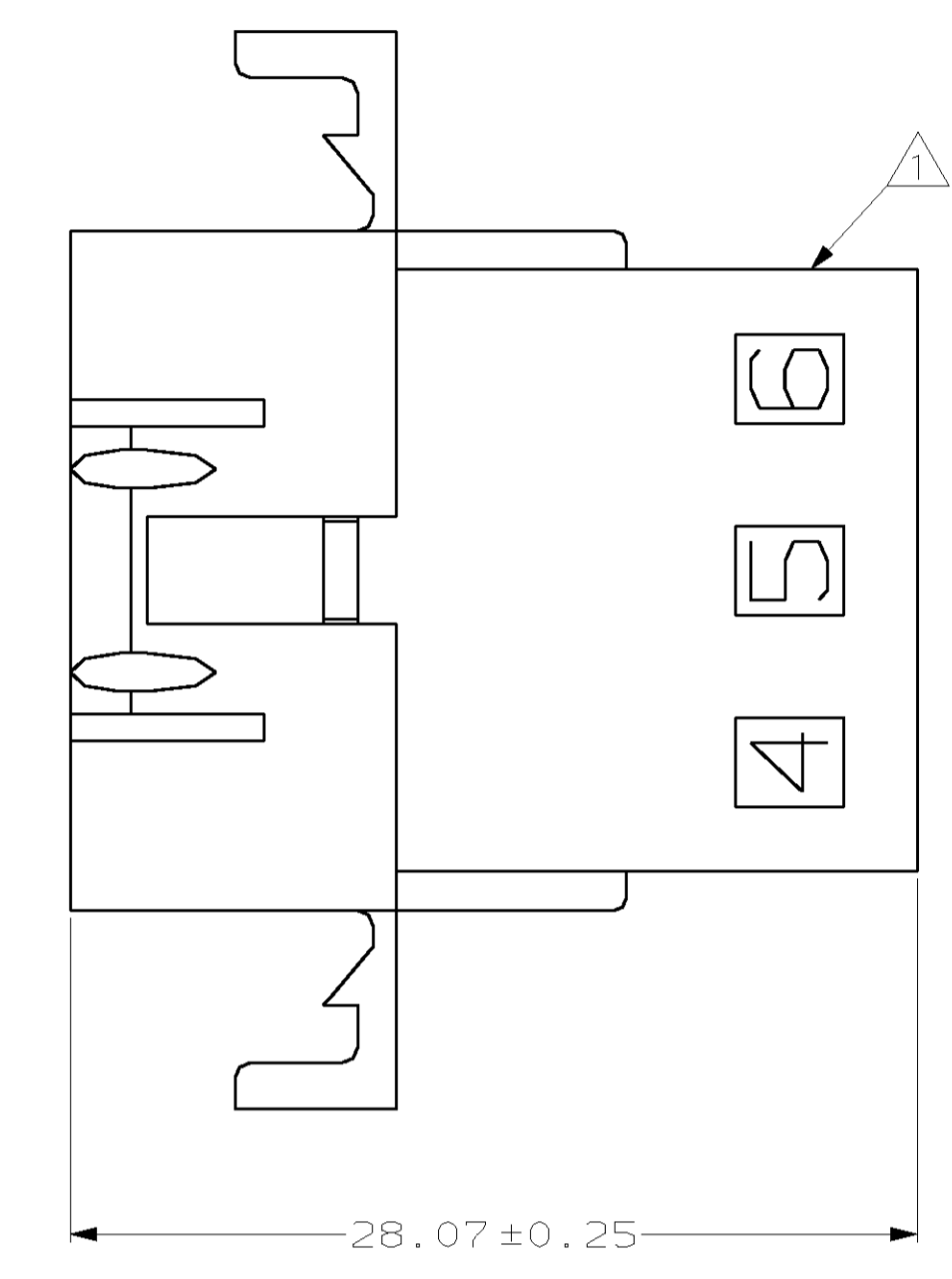
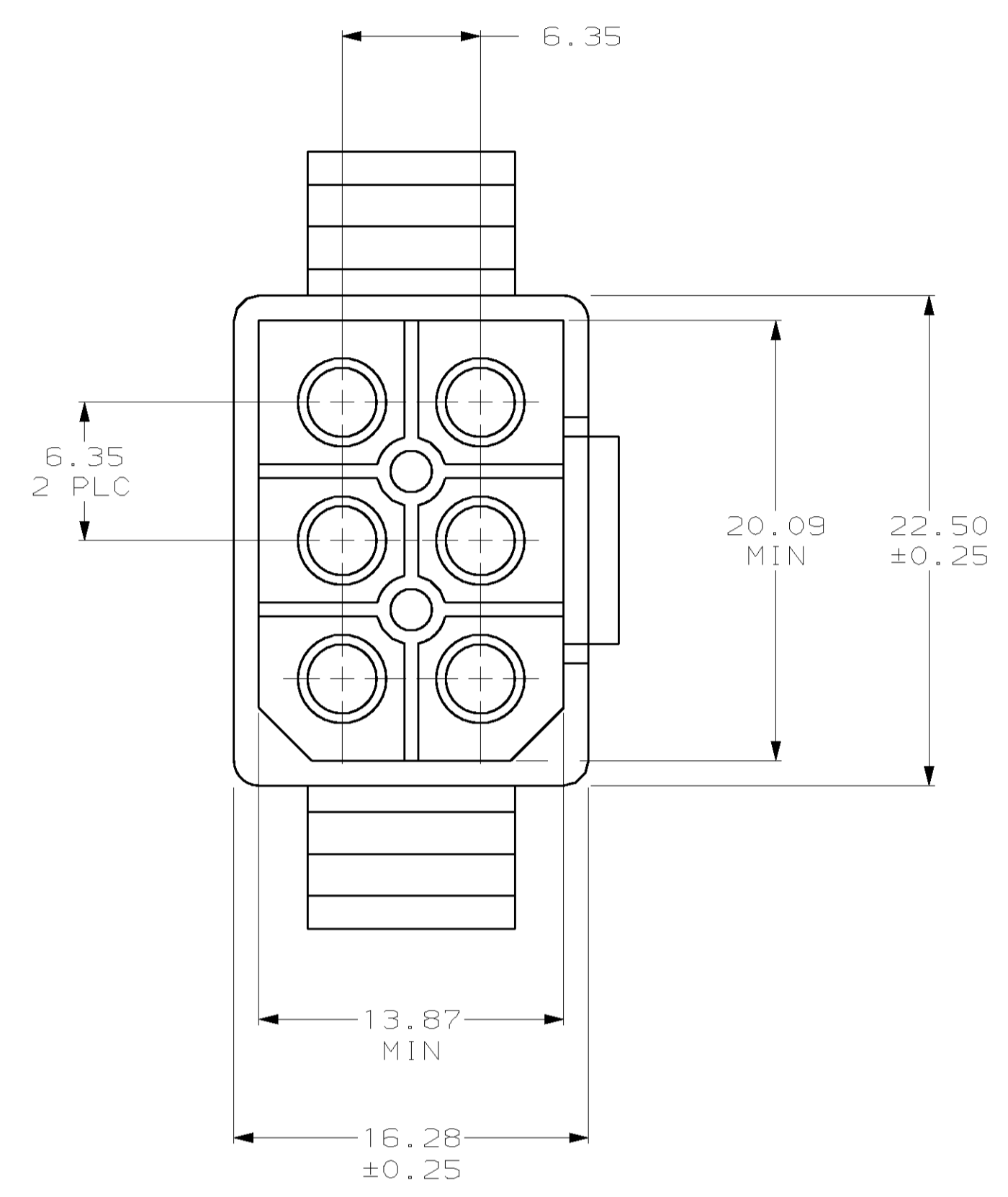
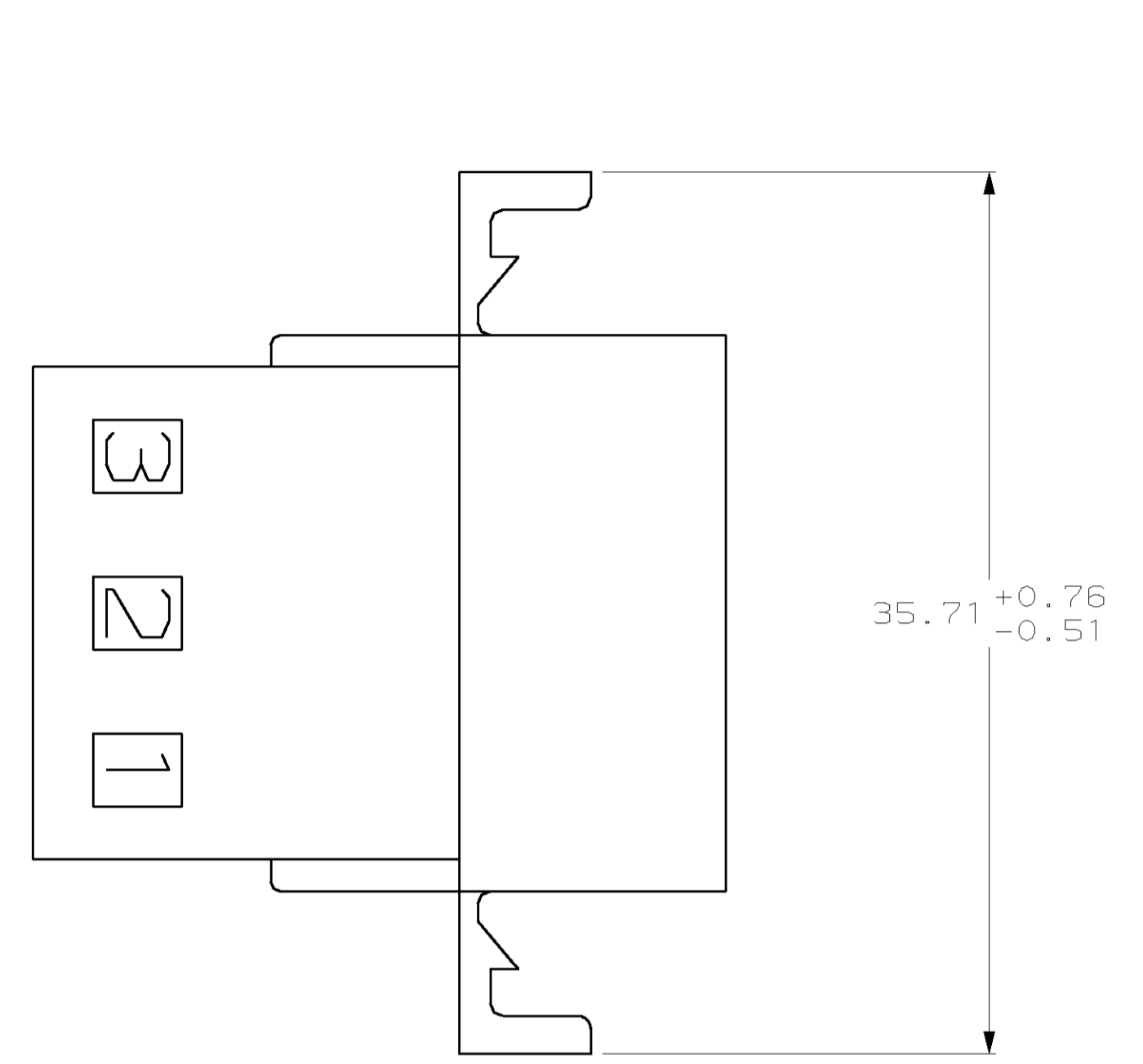
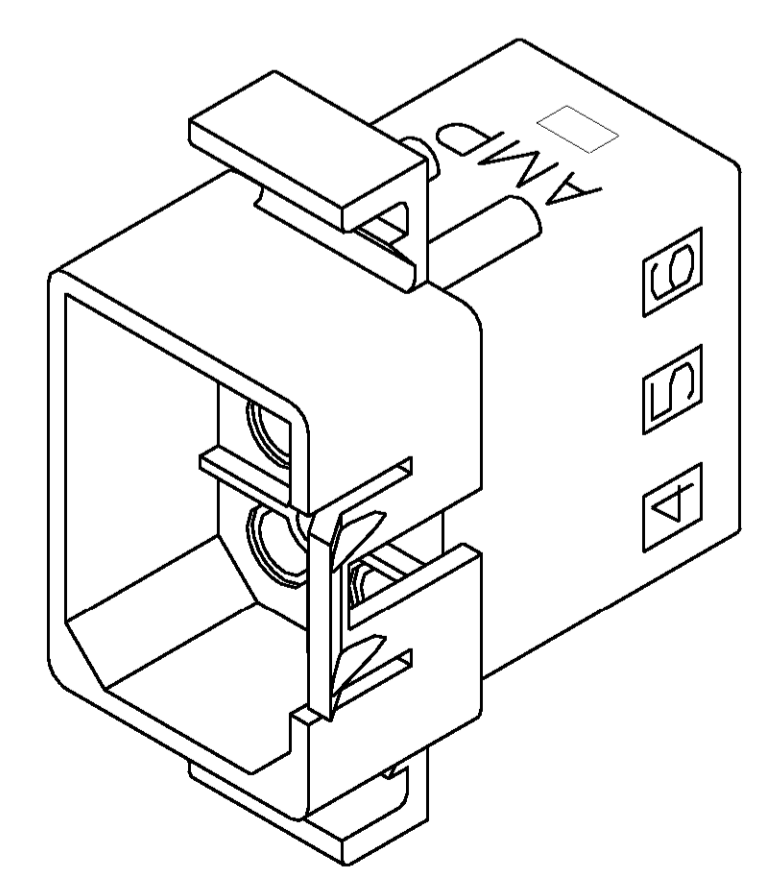


| LOC | DIST | REVISIONS | | | |
|-----|------|-----------------------------|-----------|-----|------|
| F | CHR | DESCRIPTION | DATE | OWN | APVD |
| G | | REVISED PER EC 063B-0052-00 | 17-APR-00 | KW | SR |

△ AMP LOGO AND CAVITY NUMBER LOCATED THIS SURFACE.



RECOMMENDED CUT OUT FOR 1.57 MAX THICK PANEL



3-DIMENSIONAL MODEL NTS

| MM | IN | MM | IN |
|-------|------|-------|-------|
| 13.87 | .546 | 35.71 | 1.406 |
| 6.35 | .250 | 28.07 | 1.105 |
| 1.57 | .062 | 26.62 | 1.048 |
| 0.76 | .030 | 22.50 | .886 |
| 0.51 | .020 | 20.09 | .791 |
| 0.25 | .010 | 16.71 | .658 |
| 0.13 | .005 | 16.28 | .641 |
| MM | IN | MM | IN |

CONVERSION TABLE

770373-1
PART NUMBER



THIS DRAWING IS A CONTROLLED DOCUMENT.

| | | | |
|------------------------------------|---|---------------------------|---|
| DIMENSIONS: | TOLERANCES UNLESS OTHERWISE SPECIFIED: | DWN: K. WHITAKER 12-12-97 | AMP Incorporated Harrisburg, PA 17105-3608 |
| mm | 0 PLC ± 1 PLC ± 2 PLC ±0.13 3 PLC ± 4 PLC ± | CHK: R. SWING 12-12-97 | NAME: PLUG, PANEL MOUNT, 6 CIRCUIT, .250 PIN AND SOCKET |
| | FINISH: - | APVD: K. COBLE 12-12-97 | SIZE: A1 00779 C- 770373 |
| MATERIAL: NYLON, UL 94V-2, NATURAL | WEIGHT: - | APPLICATION SPEC: - | RESTRICTED TO: - |
| | CUSTOMER DRAWING | SCALE: 4:1 | SHEET 1 OF 1 REV G |